

Singletree Trail Concepts



SINGLETREE



Singletree Trail Concepts

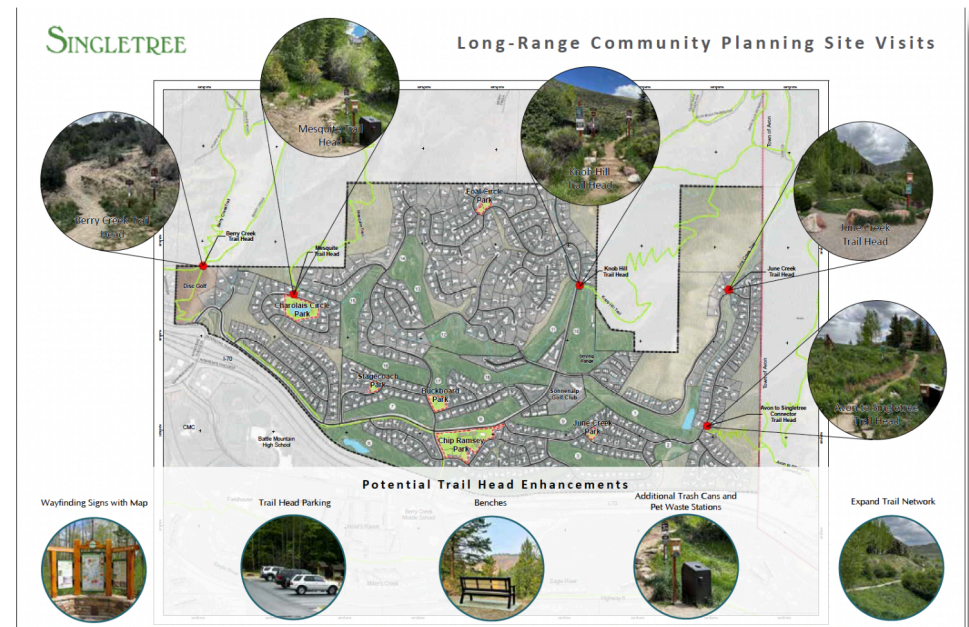
Agenda

- Community enhancement plan summary
- Considerations and boundaries for new trails
- Input to date
- Existing conditions in and bordering Singletree
- Land management & wildlife considerations
- New trail concepts
- Next steps

Community Enhancement Plan

The Singletree Community Enhancement Plan was developed in response to the evolving needs of the community, particularly the growing trend of year-round residency. Initiated in 2022, this long-term plan outlines a phased approach to improving community amenities over the next decade. **The plan was shaped by an extensive community engagement process that included open houses, neighborhood meetings, and surveys.** The focus areas include enhancements to parks, trails, and open spaces, with an emphasis on maintaining Singletree's high quality of life and outdoor recreation opportunities.

Community engagement played a crucial role in shaping the plan. Through meetings and surveys, residents provided valuable input, expressing strong support for improvements to trails, trailheads, and wayfinding signage, as well as upgrades to key parks such as Chip Ramsey Park and Charolais Circle Park. Residents prioritized enhancements that would preserve the character of these spaces while making them more accessible and enjoyable. **Key outcomes expanding trail access with clear signage.**



A significant outcome of the plan is the recognition of trails as a vital community asset. Residents emphasized their importance for outdoor recreation, health, and connectivity to surrounding open spaces. **Planned improvements include better signage, trailhead enhancements, and trail infrastructure upgrades to ensure safe and enjoyable use.** By implementing these enhancements, Singletree aims to maintain its status as a premier residential community while adapting to the evolving needs of its residents.



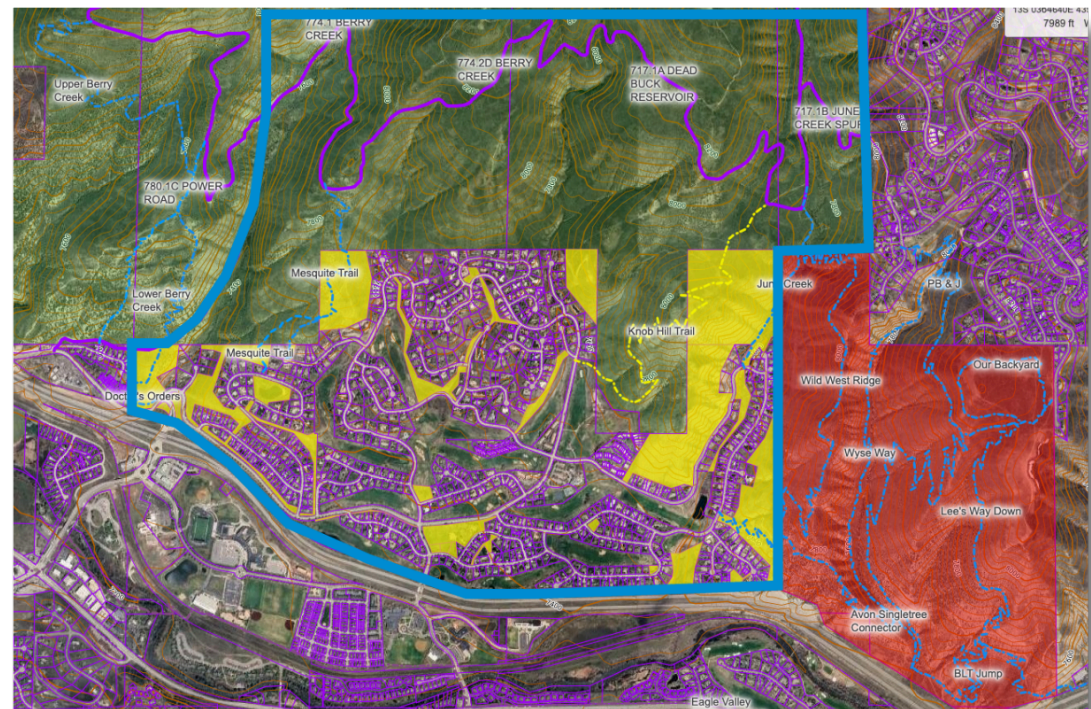
Considerations & Boundaries

What This Plan Is:

- A conceptual plan that identifies opportunities that improves the lives of the Singletree community, while providing a general public benefit.
- A conceptual plan that mitigates impacts on natural resources and wildlife by closing illegal/social trails and incorporating seasonal wildlife closures.
- A conceptual plan that is driven and informed by Singletree community members.

What This Plan Is NOT:

- An approved trails plan. All concepts require further review, public input, and environmental considerations.
- A plan that is designed to increase visitors, parking, and general public to Singletree neighborhoods.



Input/Work To Date

In the summer of 2024, the VVMTA gathered two groups of Singletree residents who are avid trail users and highly value the open space, wildlife, and trails surrounding the community. These residents reviewed existing trail conditions, land manager policies, and potential trail improvements for the community. They provided feedback on priorities, opportunities, and concerns. This conceptual plan is highly informed by the input and feedback that these Singletree residents provided in these meetings.

Timeline & Goals:



Vision

A system of soft-surface trails that are safe for all users and enjoyed by homeowners and the general public. Through best practices in design, signage, and education, trail users with diverse needs and ability levels can safely recreate on trails in the Singletree community area.

The Singletree community, adjacent land managers, and partners will continue to manage existing trails, plan and implement trail improvements, and educate trail users on safety, awareness, and trail etiquette. Proper signage and outreach will make trails easy to find and follow.

Trails provide safe, non-vehicular connections between neighborhoods and trailheads. Trails provide a connection to nature, improve physical and mental health, and contribute to the overall quality of life of Singletree residents.

All trails are designed and constructed to respect and protect sensitive wildlife habitat and terrain and may include seasonal wildlife closures during the critical winter and calving seasons. At the same time, trail opportunities for year round recreation exist for all users. Trails in Singletree are planned in coordination with the Berry Creek Metro District, Property Owners Association, Singletree residents, adjacent land managers, and community partners.

Core Themes:

Safety

- **Provide trail opportunities that reduce users on streets**
- Minimize user conflict

Connectivity

- **Provide trail opportunities that connect residents to the trails and in turn to neighborhood parks and the clubhouse**

Environmental Improvements

- **Decommission existing social trails**

Existing Conditions

Legal Trails & Roads:

Singletree is surrounded by many trails and roads on U.S. Forest Service and West Avon Preserve lands.

- These include non-motorized multi-use trails such as Berry Creek, Mesquite, June Creek, and the Avon-Singletree Connector.
- Knob Hill provides a non-mechanized or hiking/foot only trail as well.

Seasonal Wildlife Closures:

Much of the land surrounding Singletree is CPW mapped winter habitat for mule deer and elk.

- This includes migration corridors and winter concentration areas.
 - Knob Hill and West Avon Preserve closed December 15-April 15th.

Illegal/Social Trails:

There are a plethora of existing user created social trails surrounding Singletree.

Sidewalks:

The only sidewalk located throughout all of Singletree is through the main entrance and along Berry Creek Rd. to Chip Ramsey park and the Sonnenalp Golf Club.

Trailheads:

The existing trailheads in Singletree offer limited parking and access

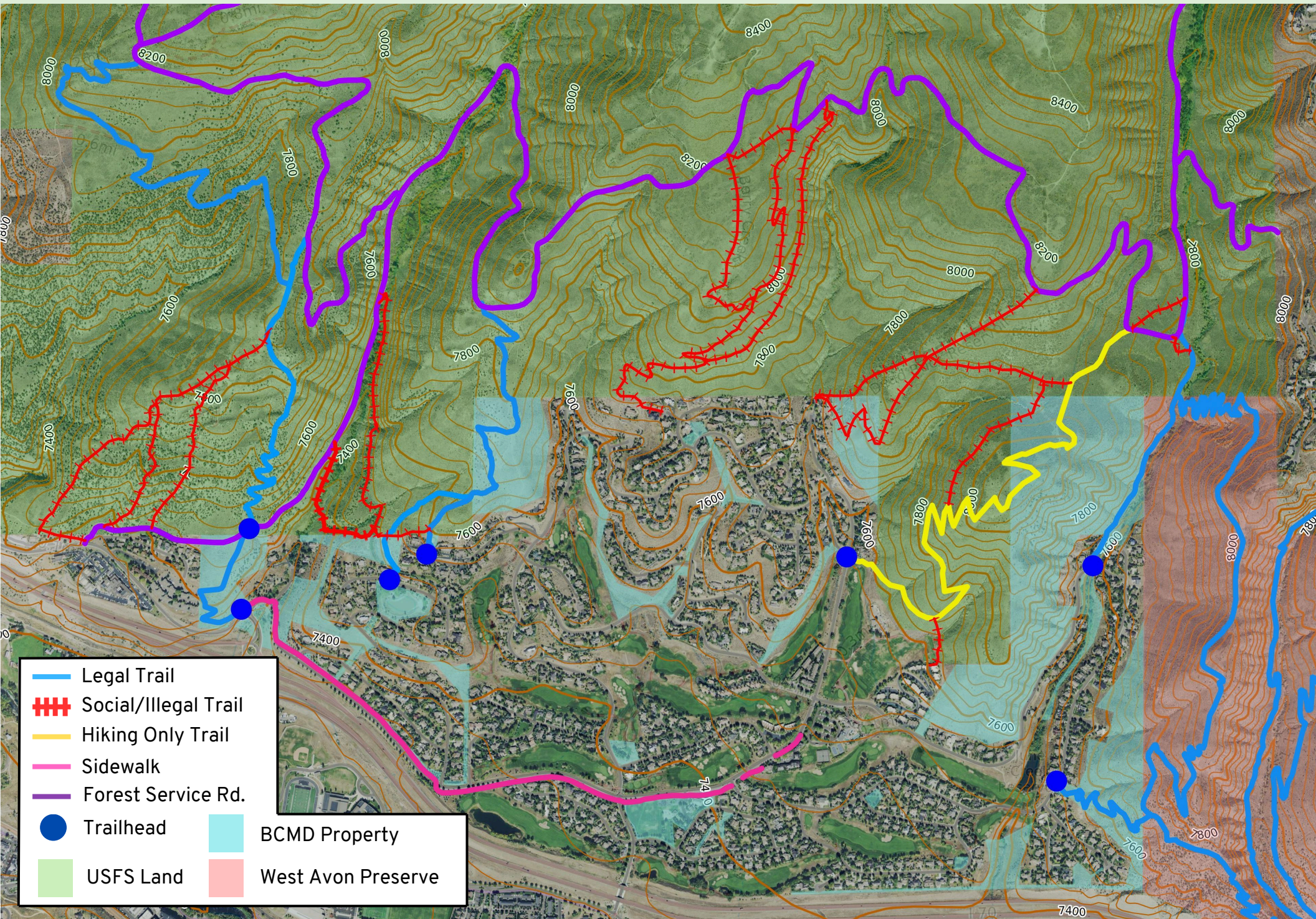
- The limited parking does not provide inclusive access for residents to easily use the surrounding trail system.
- The lack of trail connection between neighborhoods and trailheads requires residents to drive to trailheads or use unsafe roads with no sidewalks and limited shoulders.

Land Ownership/Management:

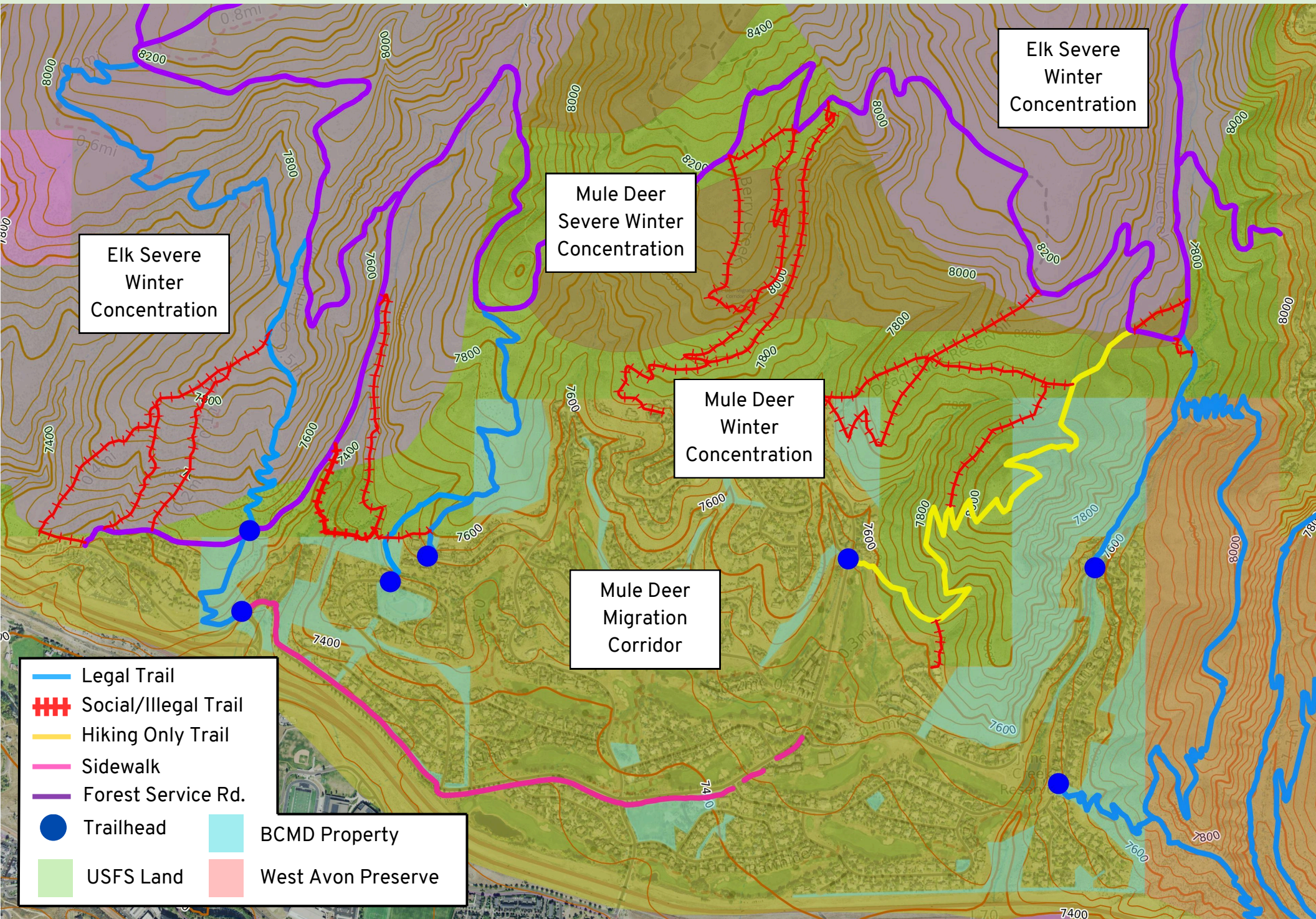
There are multiple entities that own land in and around Singletree

- Singletree is bordered by I-70 to the South,
- U.S. Forest Service to the North, West, and East
- West Avon Preserve to the East.
- Sonnenalp owns the golf course and land bordering it.
- There are many pockets of land that are owned and managed by the Berry Creek Metro District throughout Singletree.

Existing Conditions



Wildlife Considerations



Trail Concepts Overview

Conceptual Trails:

It is important to state and clarify that these are all concepts and require further public input and environmental review. None of these trail concepts are approved.

These trail concepts have been determined **based on feasibility and sustainability**. This includes incorporating land management and ownership policies, wildlife habitat, and terrain.

To help break down the trail concepts, four (4) areas have been identified:

- **West**
- **Neighborhood**
- **North**
- **East**

There are detailed maps and trail concept descriptions for each below.

Goals & Objectives:

The trail concepts provided below were evaluated to fill gaps and needs in the trail system within and surrounding the Singletree Community. This includes:

- **Connect neighborhoods and amenities within Singletree to one another and make it easier & safer for residents to get there using the new trails**

Social / Illegal Trail

Decomissions:

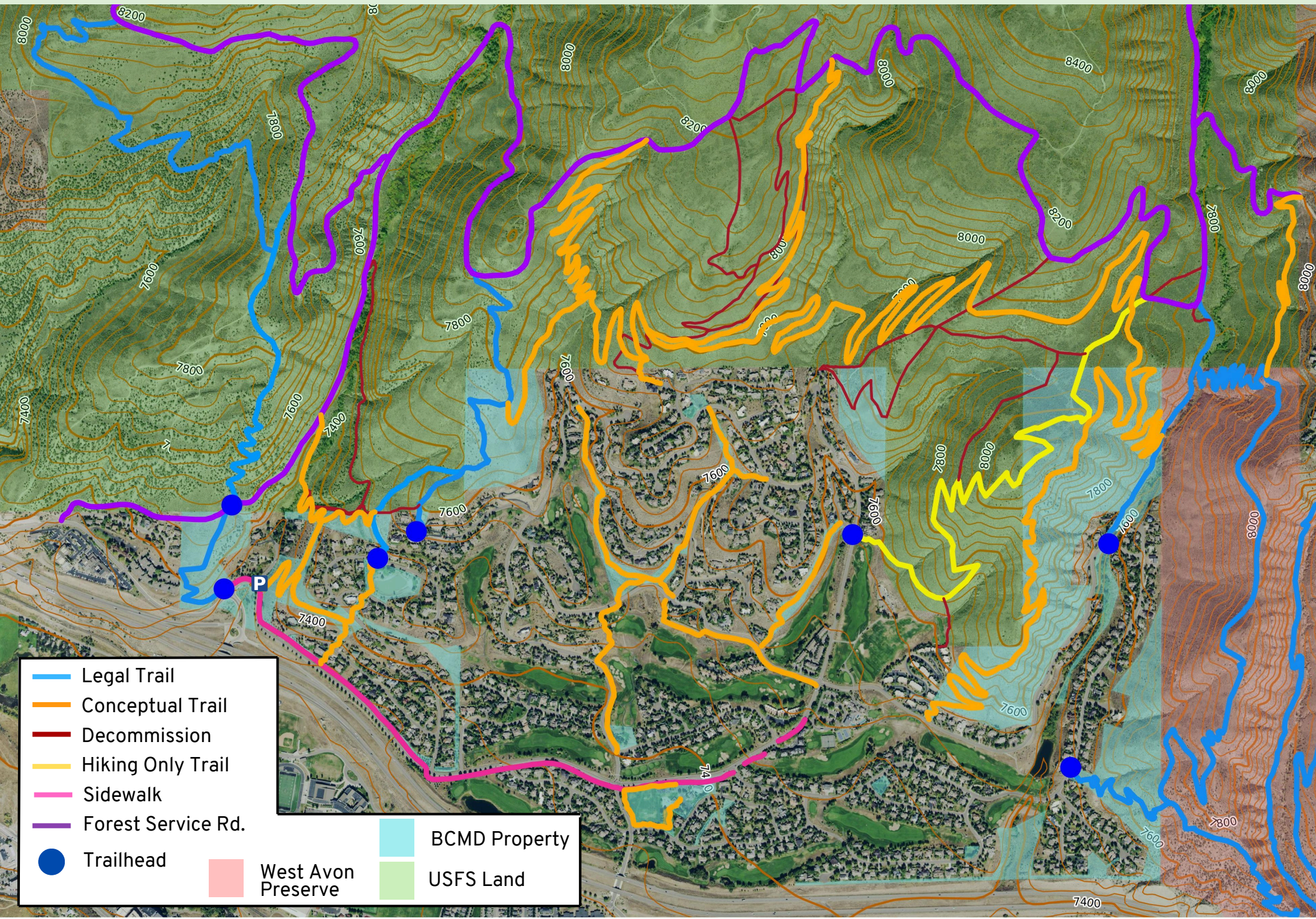
As the maps above and below show, there are numerous illegal or social trails surrounding Singletree. These social trails total over 4.5 miles. The trail concepts include closing these social trails and revegetating them.

Many of these social trails exist in areas that if legal, would likely require seasonal wildlife closures. **The new trail concepts designed to replace the existing social trails in a more sustainable manner.** They are likely to have seasonal closures from 12/15-4/15.

Trail Concepts Overview

SINGLETREE

LOVE YOUR TRAILS
VVMTA
VALLEY MOUNTAIN TRAILS ALLIANCE



Trail Concepts - West

1.2 miles of total trails

Social Trails:

There are multiple social trails in this area. Two (2) of them are used to connect to the Berry Creek Rd. and trail system.

One of them is located along a ditch owned by the Sonnenalp which is critical infrastructure for them to operate the golf course. The Sonnenalp highly desires this use to be stopped.

The other one crosses Berry Creek which does not have a bridge and likely causes negative impacts on the watershed.

Lastly, the third social trail in this area connects the Mesquite trail to the upper spur of the the trail, ending at the water tank.

Trail Concepts:

West 1 (0.45 mile):

- Singletrack non-motorized trail open to hiking, running, and mountain biking
- Connects the Mesquite trail to the existing sidewalk and entrance/exit of Singletree
- Future connector to the West 2 trail concept
- Potential trailhead parking area (4-6 spots) at Latigo entrance

West 2 (0.30 mile):

- Singletrack non-motorized trail open to hiking, running, and mountain biking
- Establishes a sustainable and legal trail connecting Singletree to the Berry Creek trail system
- Bridge to be built for creek crossing
- Decommission existing social trail

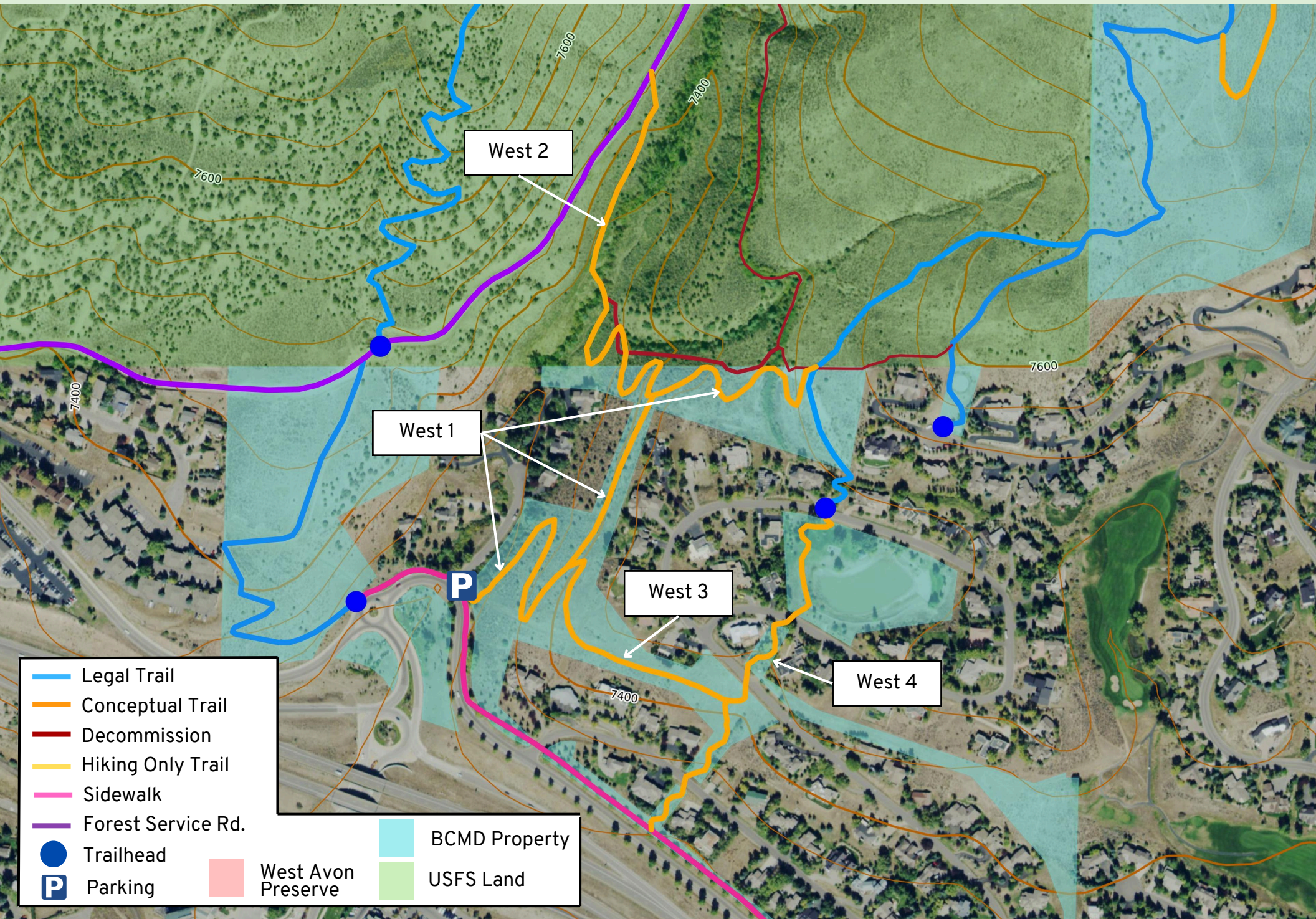
West 3 (0.16 mile):

- Singletrack non-motorized trail open to hiking, running, and mountain biking
- Neighborhood connector trail used for dog walkers, families, and as a connection to Mesquite and Berry Creek trails
- Removes walkers and bikers from using the street

West 4 (0.27 mile):

- Singletrack non-motorized trail open to hiking, running, and mountain biking
- Neighborhood connector trail used for dog walkers, families, and as a connection to Charolais Circle Park
- Removes walkers and bikers from using the street
- Reduces parking at Charolais Circle Park and Mesquite trailhead

Trail Concepts - West



Trail Concepts - Neighborhoods

1.8 miles of total trails

Singletrack Sidewalks:

Singletrack sidewalks are dirt trails that provide an alternative to roads. They connect neighborhoods, parks, trailheads, and community amenities, offering a fun and active way to get around. Sidewalks cost \$\$\$\$\$, while Singletrack Sidewalks cost \$.

Singletree currently does not have sidewalks located throughout the community. This causes increased vehicle traffic and unsafe conditions for walkers, runners, and or bikers on the road. In addition, parking at the Sonnenalp Club is often stressed because residents must drive there.

The singletrack sidewalk concept within Singletree connects pockets of the community to parks, the club, and trailheads. These trails can be used by individuals, families, dog walking, and more.

Trail Concepts:

Neighborhood 1 (0.37 mile):

- Singletrack non-motorized trail open to hiking, running, and mountain biking
- Located on EVMD property, this trail would provide area residents the opportunity to walk, run, or ride in their backyard and with their family

Neighborhood 2 (0.41 mile):

- Singletrack non-motorized trail open to hiking, running, and mountain biking
- Located on EVMD property, this trail would provide area residents the opportunity to walk, run, or ride in their backyard and with their family

Neighborhood 3 (0.41 mile):

- Singletrack non-motorized trail open to hiking, running, and mountain biking
- This is located mainly on Sonnenalp property

- The trail would be built just off the shoulder of the road and provide access to Chip Ramsey park

Neighborhood 4 (0.35 mile):

- Singletrack non-motorized trail open to hiking, running, and mountain biking
- Located on Sonnenalp property
- Provides a connection to the Sonnenalp golf club

Neighborhood 5 (0.28 mile):

- Singletrack non-motorized trail open to hiking, running, and mountain biking
- Located on EVMD property and provides a connection to the Knob Hill trail

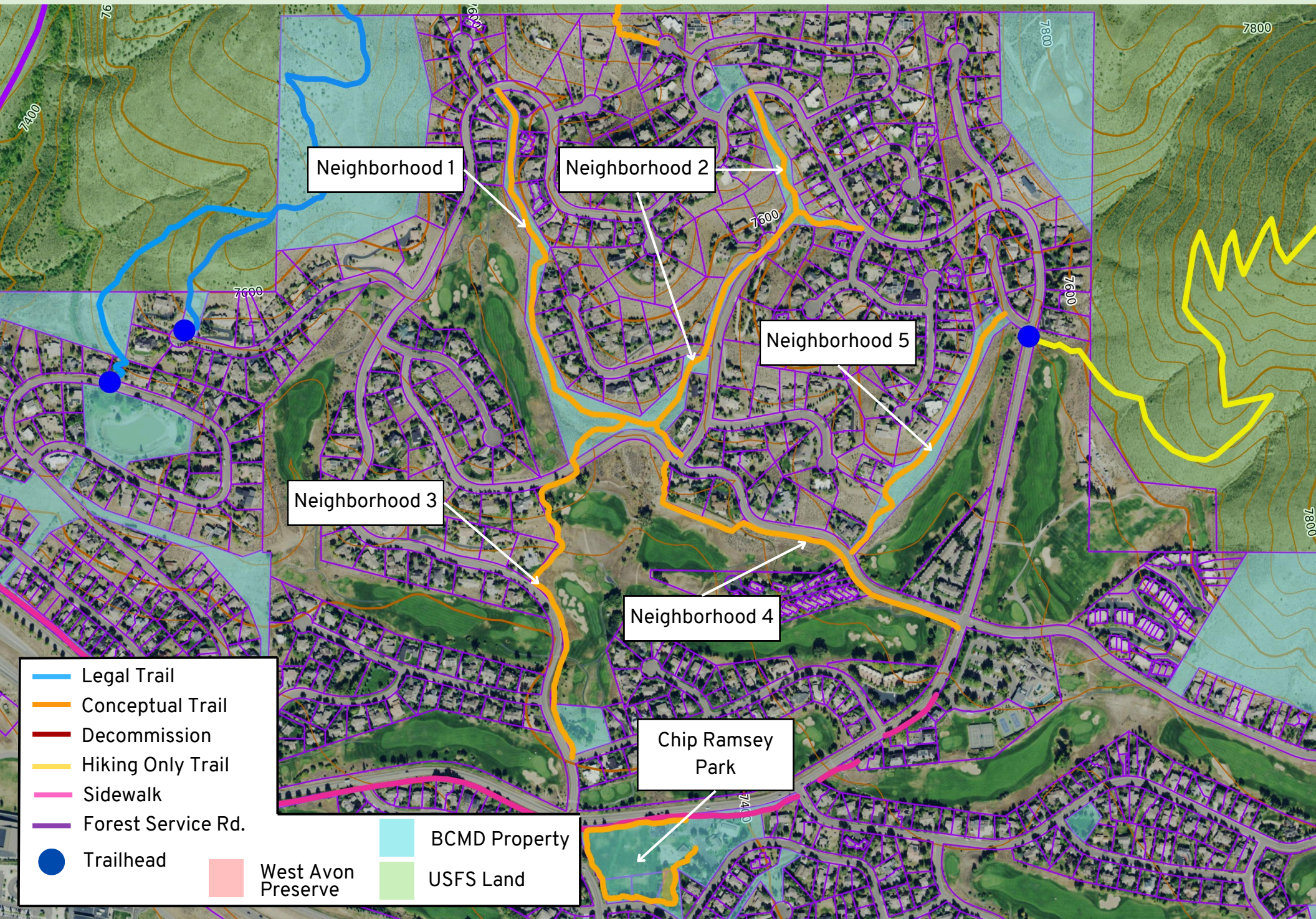
Chip Ramsey Park:

- Opportunity for a park rim trail for kids and families to enjoy
- Opportunity for a pocket pumptrack for kids and families to enjoy

Trail Concepts - Neighborhoods

SINGLETREE

LOVE YOUR TRAILS
VVMTA
VALLEY MOUNTAIN TRAILS ALLIANCE



Trail Concepts - North

5.3 miles of total trails

Social Trails:

There are multiple social trails in this area. These trails are heavily used, unmanaged, and located in deer and elk winter range.

The social trails are accessed through private property and existing trails and roads. In 2024, a trail counter on the social trail near “North 2” collected 250 counts per month on average. So far over the 2025 winter months, the average monthly count is 217.

The social trails that connect into Knob Hill are not managed or signed with seasonal wildlife closures even though they are connecting to a closed trail during the winter and into the spring.

It is likely that these trails are having negative impacts on wildlife during the winter season.

Trail Concepts:

North 1 (0.96 mile):

- Singletrack non-motorized trail open to hiking, running, and mountain biking
- Seasonal wildlife closure: 12/15-4/15
- Established trail connection from Singletree to Berry Creek Rd./774
- Provides a loop option with the Mesquite trail

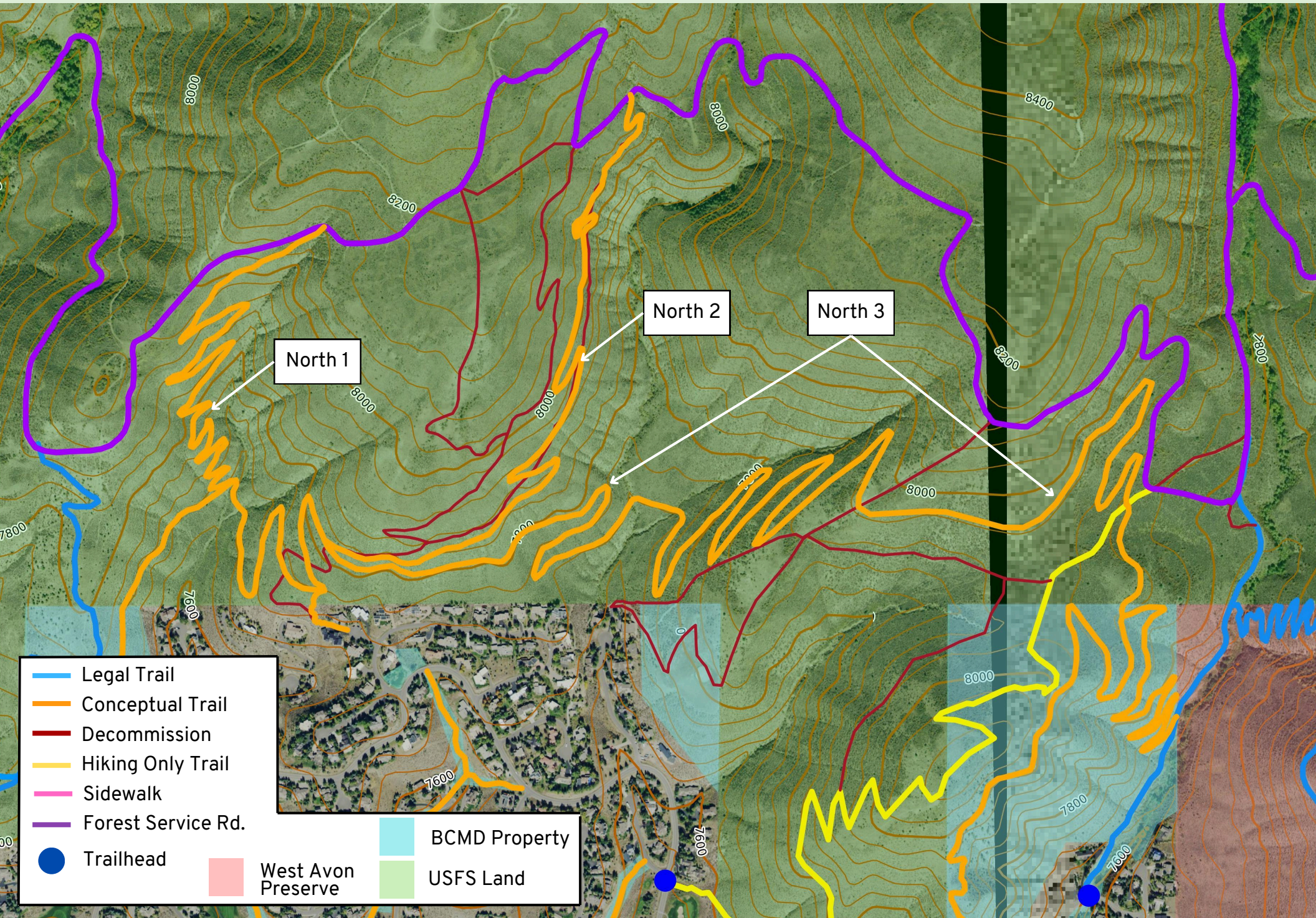
North 2 (1.06 miles):

- Singletrack non-motorized trail open to hiking, running, and mountain biking
- Seasonal wildlife closure: 12/15-4/15
- Establishes a sustainable and legal trail connecting the Singletree community to Berry Creek Rd./774
- Decommission existing social trails in the area

North 3 (3.27 miles):

- Singletrack non-motorized trail open to hiking, running, and mountain biking
- Seasonal wildlife closure: 12/15-4/15
- Establishes a sustainable and legal trail connecting Mesquite trail to the Knob Hill trail and East area trail concept, creating a community loop option.
- Decommission existing social trails in the area

Trail Concepts - North



Trail Concepts - East

1.9 miles of total trails

Social Trails:

There are multiple social trails in this area. These trails are user created to meet the demand of accessing the Knob Hill trail.

These social trails are not managed and therefore do not have signage or gates making users aware that the Knob Hill trail is under a seasonal wildlife closure from 12/15-4/15.

Trail Concepts:

East 1 (1.42 miles):

- Singletrack non-motorized trail open to hiking, running, and mountain biking
- Seasonal wildlife closure: 12/15-4/15
- Provides a trail connection to Knob Hill, North 3, and June Creek
- Removes trail users from the road

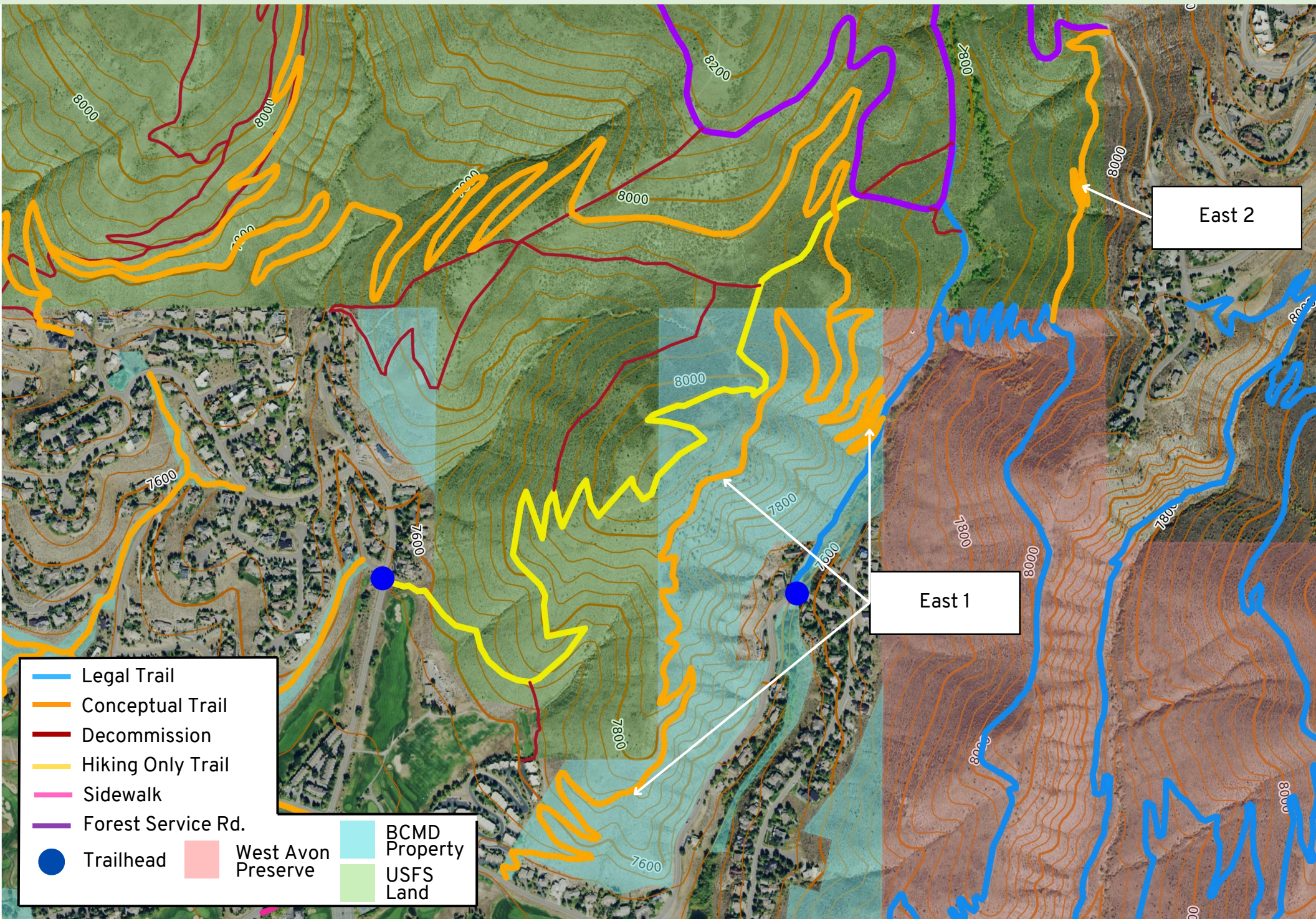
East 2 (0.48 mile):

- Singletrack non-motorized trail open to hiking, running, and mountain biking
- Seasonal wildlife closure: 12/15-4/15
- Creates an upper connection from Wild West to the Wildridge/U.S. Forest Service access road

Trail Concepts - East

SINGLETREE

LOVE YOUR TRAILS
VVMTA
VALLEY MOUNTAIN TRAILS ALLIANCE



Next Steps

Community Engagement & Feedback:

Further community feedback and engagement is needed to understand the community's thoughts, needs, and priorities. This engagement includes:

- EVMD & SPOA Board Input
- Community Open House-June 2025
- Send out a survey to the community for more comprehensive feedback
- Engagement with the Sonnenalp
- Reconvene with BCMD & SPOA late summer

